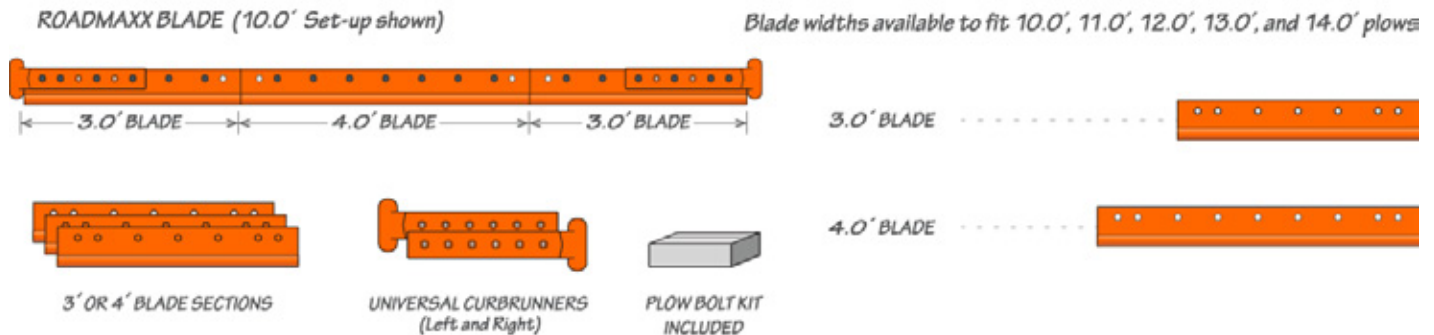




## INSTALLATION INSTRUCTIONS

# RoadMAXX® Cutting Edge System

### PARTS INCLUDED



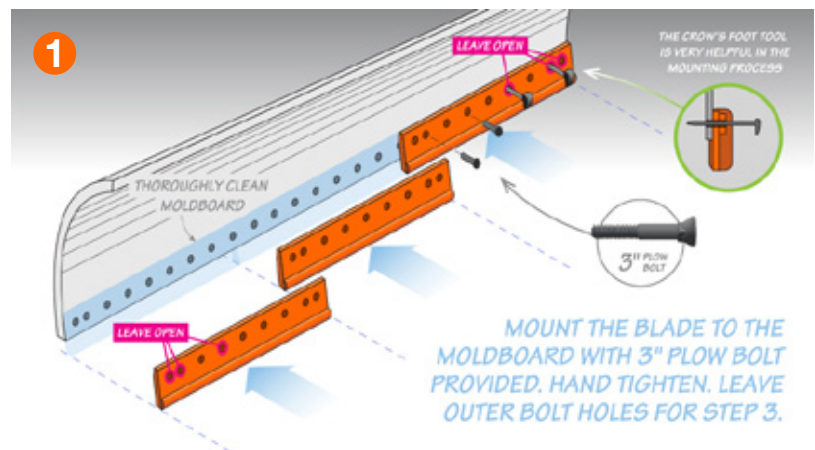
### IMPORTANT!

The moldboard mounting surface must be clean of all foreign material prior to installing new blades and hardware to avoid issues with bolt loosening while in service.

- ◆ For torque recommendation, please refer to SAE J1701
- ◆ Re-torque hardware after the first 10 plow hours

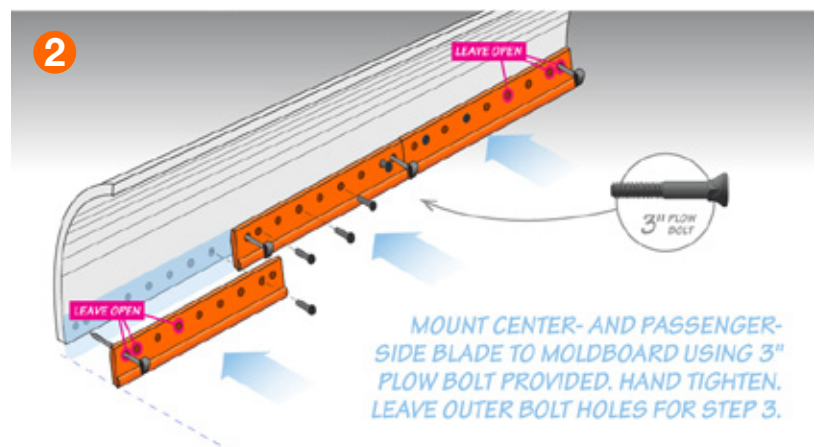
### Step 1

Clear moldboard of all foreign material before mounting RoadMAXX® blade sections with the 3" plow bolts in the provided mounting hardware kit. Leave the outside bolt holes empty for Step 3.



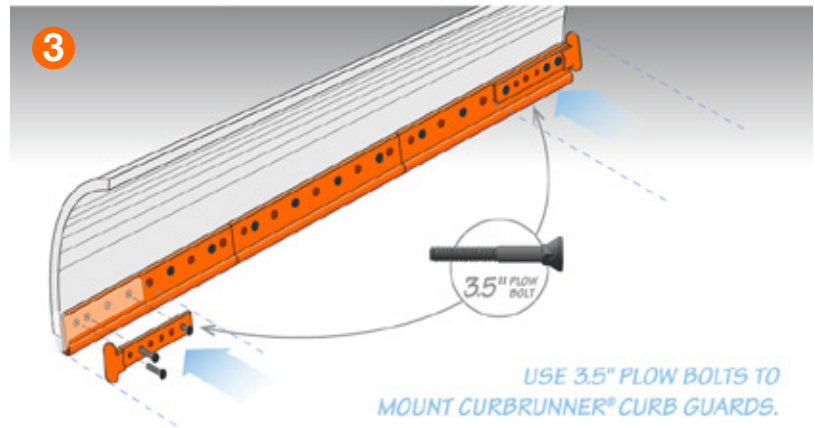
### Step 2

Install center and passengers-side RoadMAXX® sections. Leave the last four bolt holes empty for Step 3.



### Step 3

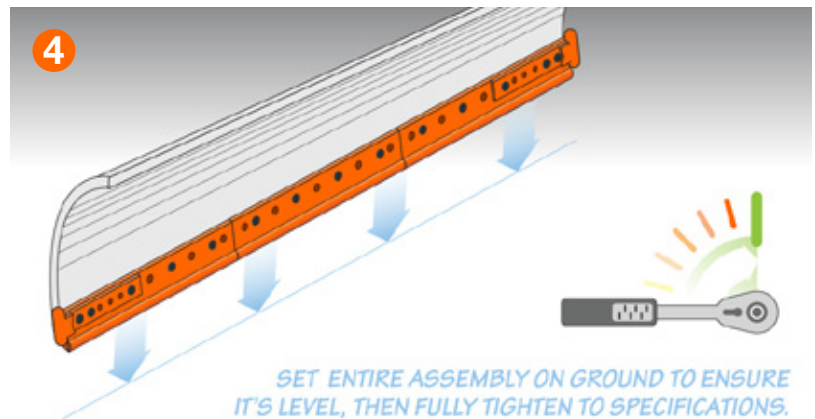
Install Universal CurbRunner® curb guards on plow ends with 3.5" plow bolts included.



### Step 4

Set entire assembly on ground to ensure it's level.

Fully tighten all bolts. For torque specification, please refer to SAE J1701.



Re-torque hardware after the first 10 plow hours