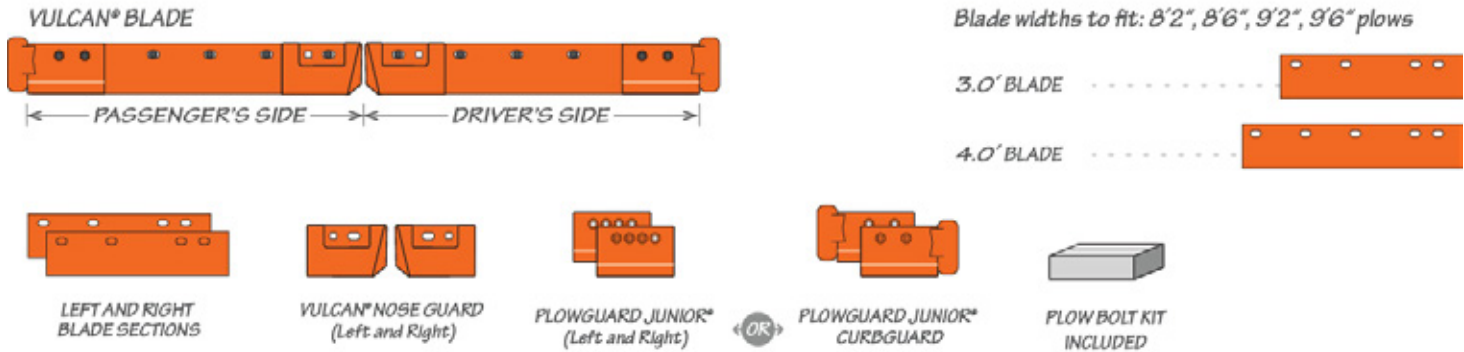




INSTALLATION INSTRUCTIONS

Vulcan® Cutting Edge System

PARTS INCLUDED



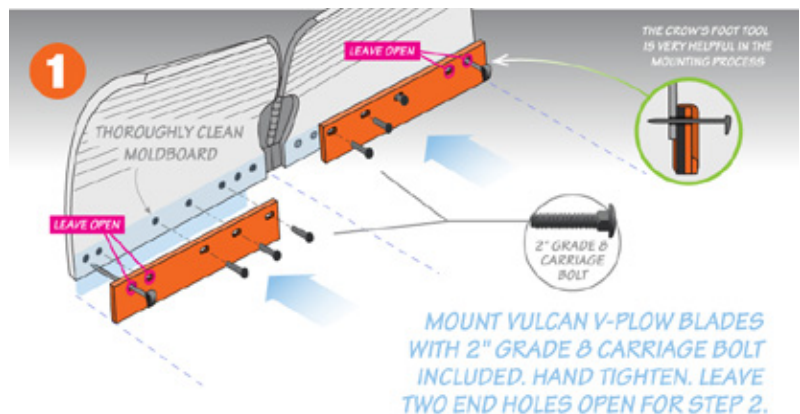
IMPORTANT!

The moldboard mounting surface must be clean of all foreign material prior to installing new blades and hardware to avoid issues with bolt loosening while in service.

- ◆ For torque recommendation, please refer to SAE J1701
- ◆ Re-torque hardware after the first 10 plow hours

Step 1

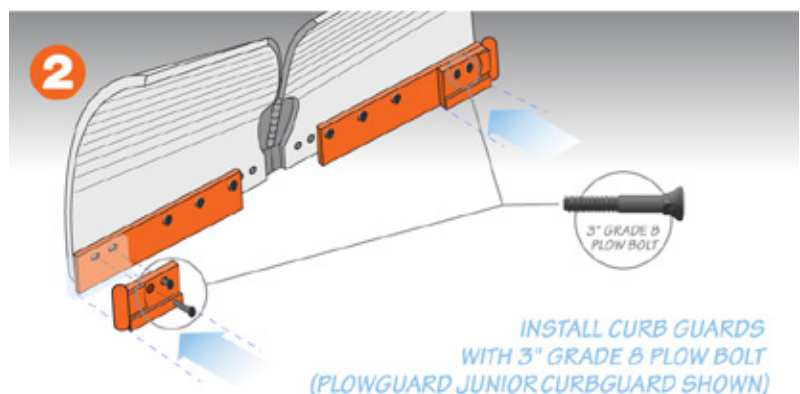
Clear moldboard of all foreign material before mounting Vulcan® V-plow blade sections with 2" Grade 8 carriage bolts. Hand tighten. Leave the outside bolt holes empty for Step 2.



Step 2

Install drivers- and passengers-side curb guards* with the 3" Grade 8 plow bolts. Hand tighten.

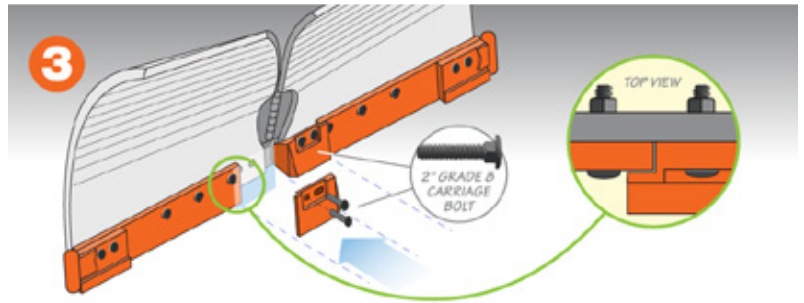
**System can be ordered with a set of PlowGuard Jr. Guards or PlowGuard Jr. CurbGuards.*



Step 3

Install center Nose Guards with 2" Grade 8 carriage bolts.

*NOTE: Nose Guard overlaps adjacent blade end.

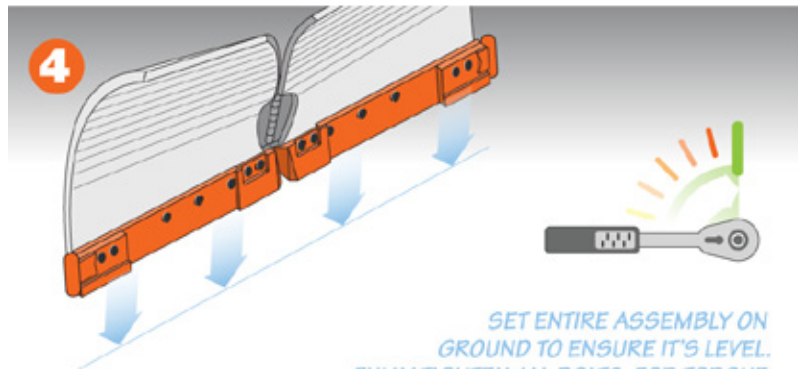


INSTALL CENTER NOSE PIECES
WITH 2" GRADE 8 CARRIAGE BOLT.
NOTE: NOSE GUARD OVERLAPS END OF BLADE

Step 4

Set entire assembly on ground to ensure it's level.

Fully tighten all bolts. For torque specification, please refer to SAE J1701.



SET ENTIRE ASSEMBLY ON
GROUND TO ENSURE IT'S LEVEL.
FULLY TIGHTEN ALL BOLTS. FOR TORQUE
RECOMMENDATION, PLEASE REFER TO SAE J1701.



Re-torque hardware after
the first 10 plow hours